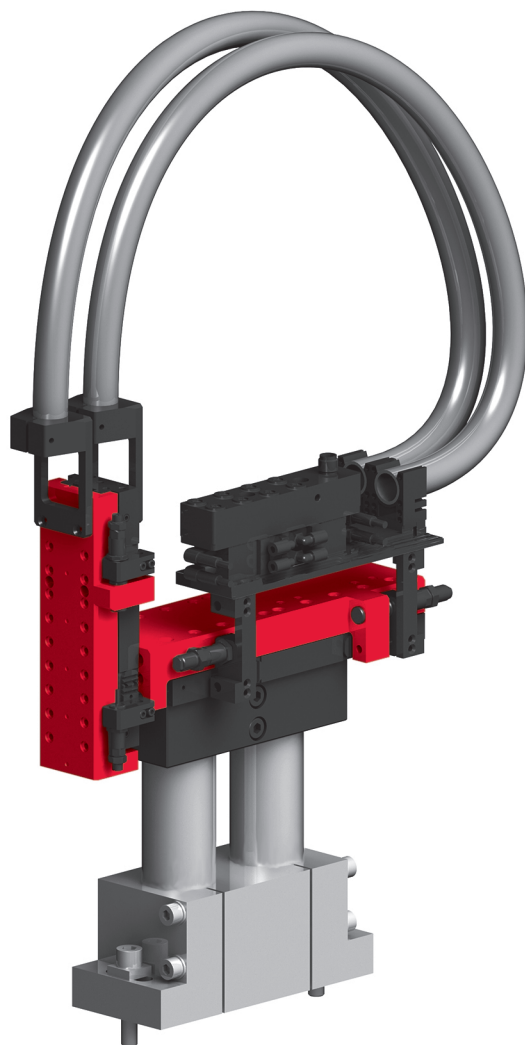


Pneumatically handling systems

EPS mini YZ



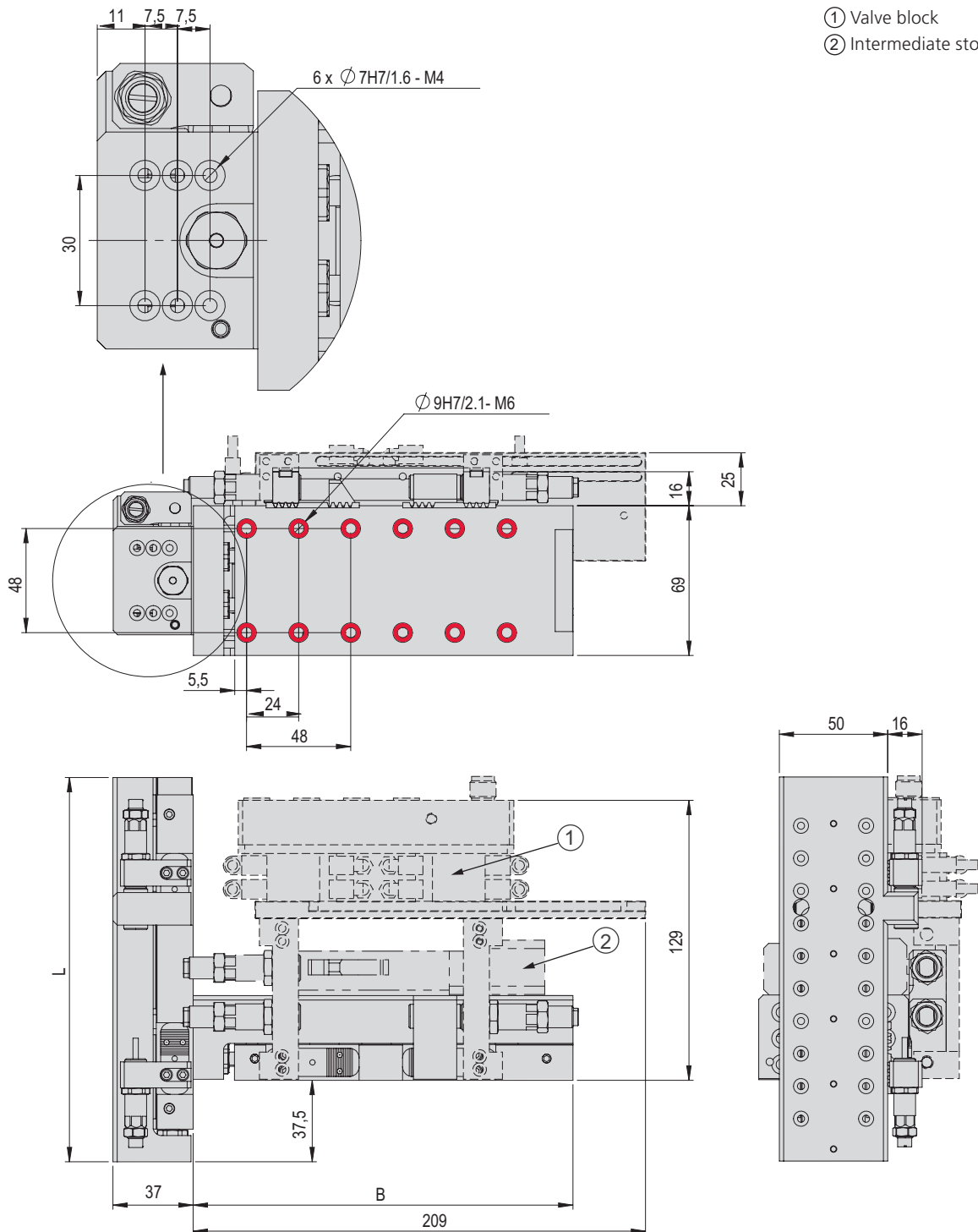
- Compact, fully pre-cabled and pre-piped ready for operation
- Intermediate stop available for Y and Z
- Y-stroke up to 150 mm

Dimensions

EPS mini YZ

Type	B
CS 20/50	175 mm
CS 20/100	235 mm
CS 20/150	295 mm

Type	L
CS 16/30	130 mm
CS 16/60	177 mm
CS 16/90	209 mm
CS 16/120	252 mm



- ① Valve block
- ② Intermediate stop

⊕ Bores can be screwed through. For additional bores that can be screwed through, see catalogue HT components linear.

EPS mini YZ	
Order number	50456539
Drive type	pneumatical
Repeat accuracy	± 0.02 mm
Temperature range	0 ... 50 °C
Control block with 5/3, 5/2 or vacuum units	up to 6 valves

Type	Y-axis
Axis	CS 20
Stroke horizontal	50, 100, 150 mm
Air connection P	M5
Maximum speed	1 m/s
Retract piston force	207 N
Extend piston force	241 N

Type	Z-axis
Axis	CS 16
Stroke vertical	30, 60, 90, 120 mm
Air connection P	M5
Maximum speed	1 m/s
Retract piston force	103 N
Extend piston force	120 N

Included in the delivery *

- 2x Ø 7h6 Centring sleeves
- 2x Ø 9h7 Centring sleeves
- 4x Special screws M6x25/9
- 4x Shock absorbers
- Hose
- Complete piping/wiring

Accessories

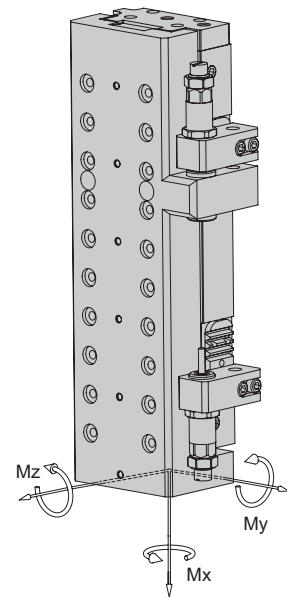
(Catalogue HT accessories)

- Console
- Valve block
- Initiators
- Intermediate stop ZA-CS
(Catalogue HT components linear)
- Rotary modules
(Catalog HT components gripping/rotating)
- Gripper modules

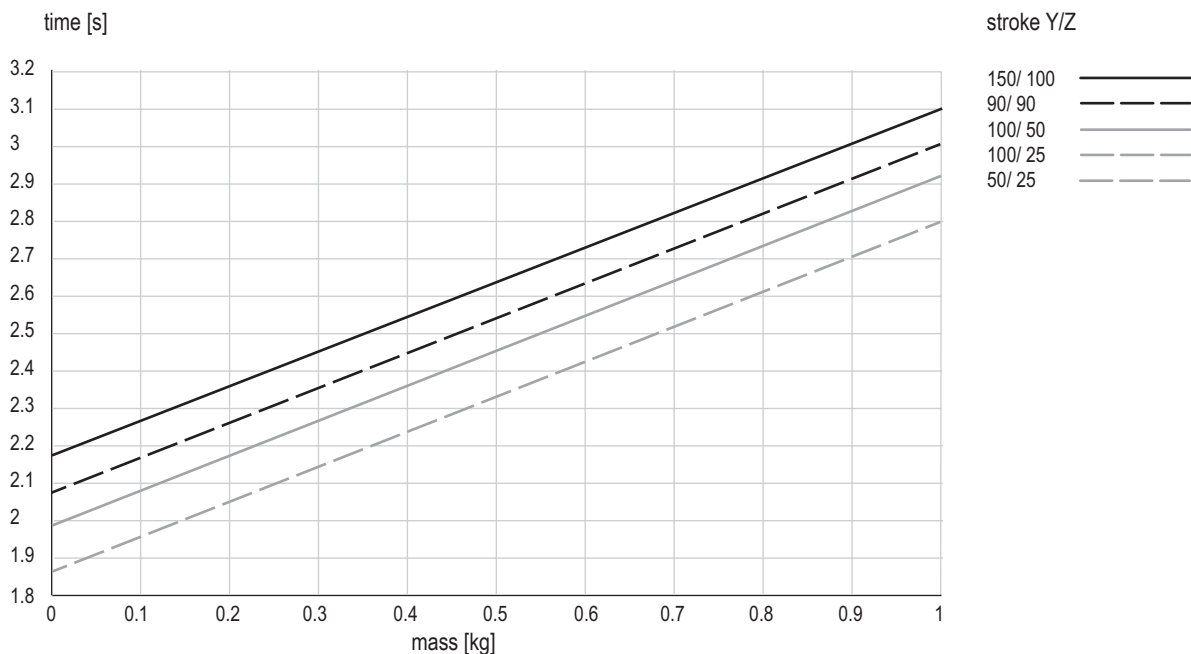
* Deviations possible depending on installed peripherals

Warranty: 24 months following commissioning, but a maximum of 27 months following delivery

Type	CS 16/30	CS 16/60	CS 16/90	CS 16/120
Static torque Mx	10 Nm	14 Nm	14 Nm	14 Nm
Static torque My	18 Nm	32 Nm	33 Nm	39 Nm
Static torque Mz	25 Nm	44 Nm	46 Nm	56 Nm



Cycle times EPS mini YZ for Pick & Place



Times including 2 x 100 ms gripping time

Comment:

The values in the chart correspond to a Pick-and-Place cycle (6 subsequent movements + 2 x 100 ms gripping time). The indicated mass is centrally installed at the vertical linear unit. Standstill times of handling permit shorter movement times. In exceptions, e.g. at eccentric mass or high requirements to accuracy, the value may be exceeded.