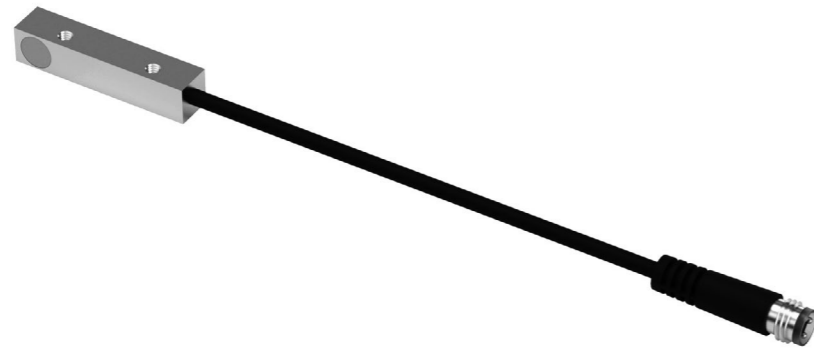


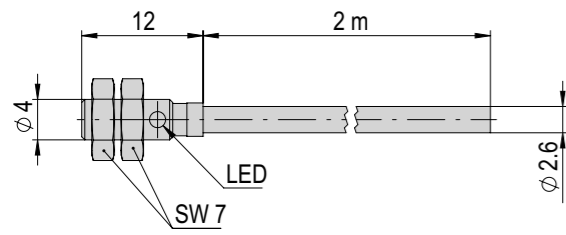
Initiatoren

Initiatoren	Seite
Initiatoren	70
Zubehör Initiatoren	74



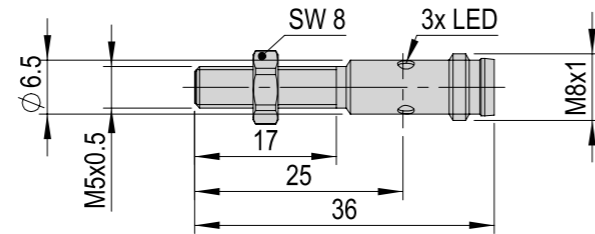
INI M4x12-Sn0.8-PNP-NO

Bestellnummer	50448225
Bruttogewicht	0.01



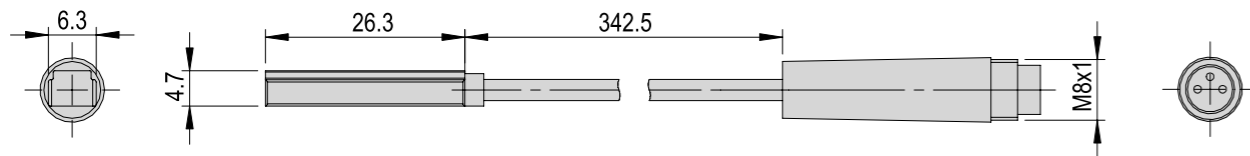
INI d5x36-Sn2.0-PNP-NC-M8x1

Bestellnummer	50285525
Nettogewicht	0.007 kg
Betriebsspannung	10 - 30 VDC
Schaltabstand	1.5 mm



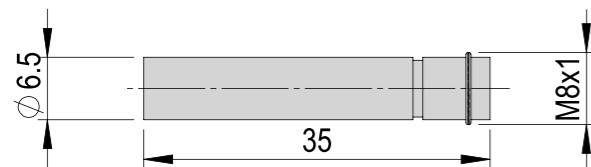
INI 6.3x4.7x26.3-Em-PNP-NO-M8x1

Bestellnummer	11010759
Nettogewicht	0.007 kg
Betriebsspannung	10 - 30 VDC



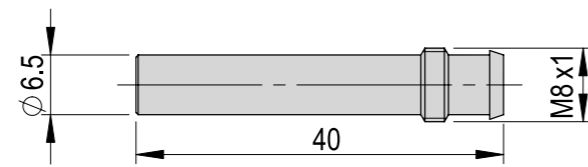
INI d6.5x35-Sn1.5-PNP-NO-M8x1

Bestellnummer	50003811
Nettogewicht	0.009 kg
Betriebsspannung	10 - 30 VDC
Schaltabstand	1.5 mm



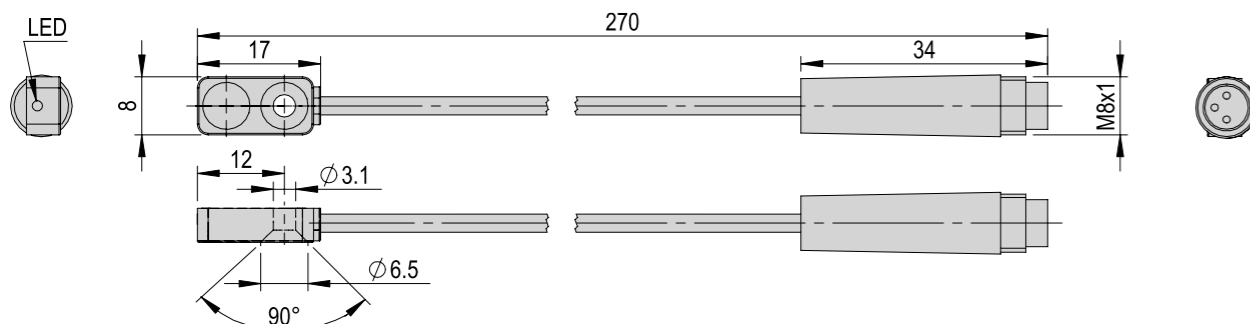
INI d6.5x44-Sn1.5-PNP-NO-M8x1

Bestellnummer	11005439
Nettogewicht	0.005 kg
Betriebsspannung	10 - 30 VDC
Schaltabstand	1.5 mm



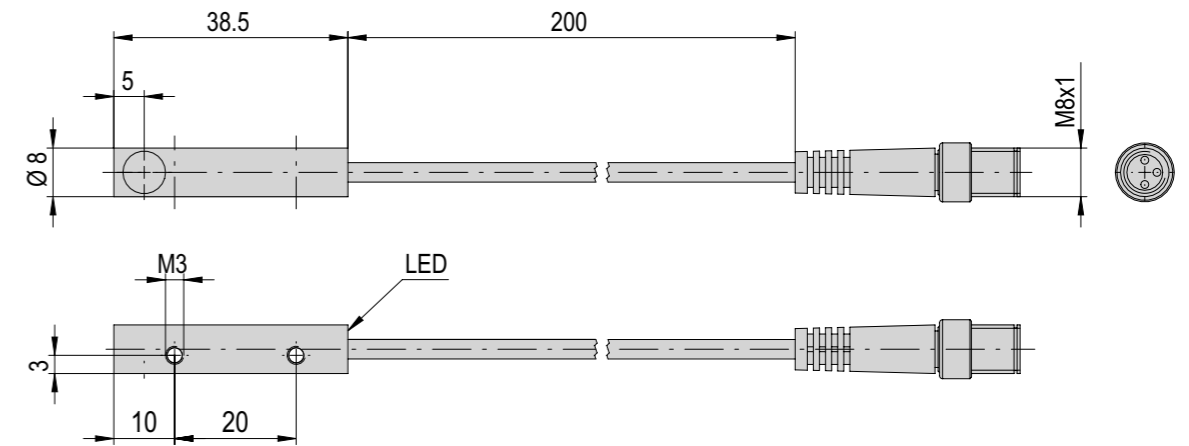
INI 8x4.7x16-Sn2.0-PNP-NC-M8x1

Bestellnummer	50230625
Nettogewicht	0.004 kg
Betriebsspannung	10 - 30 VDC
Schaltabstand	1.5 mm



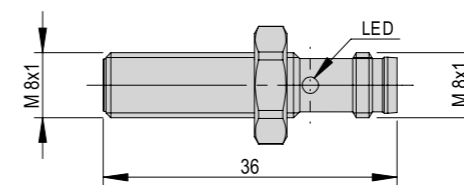
INI 8x8x38.5-Sn1.5-PNP-NO-M8x1

Bestellnummer	50428013
Nettogewicht	0.043
Betriebsspannung	10 - 30 VDC
Schaltabstand	1.5 mm



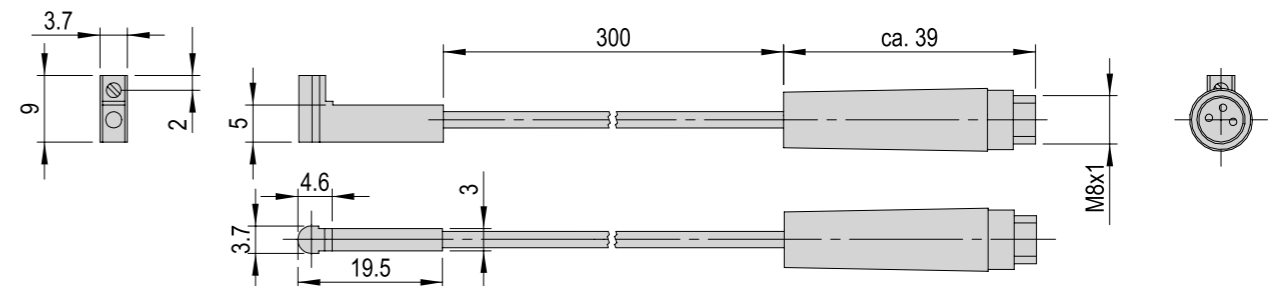
INI d8x36-Sn2.0-PNP-NC-M8x1

Bestellnummer	50144770
Nettogewicht	0.014 kg
Betriebsspannung	10 - 30 VDC
Schaltabstand	1.5 mm



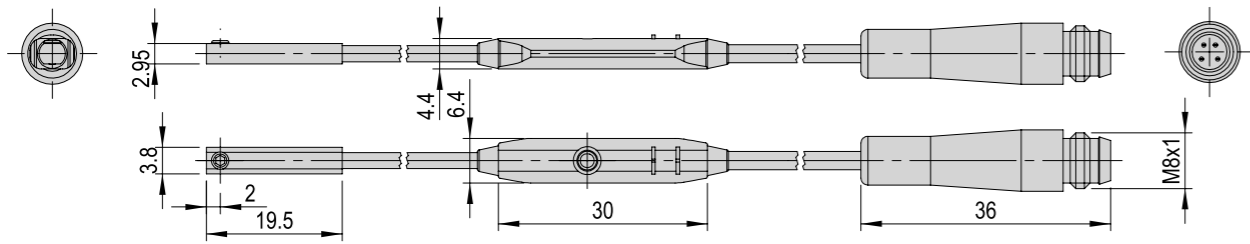
INI c10x9-Em-PNP-NO-M8x1

Bestellnummer	50313986
Nettogewicht	0.02 kg
Betriebsspannung	10 - 30 VDC



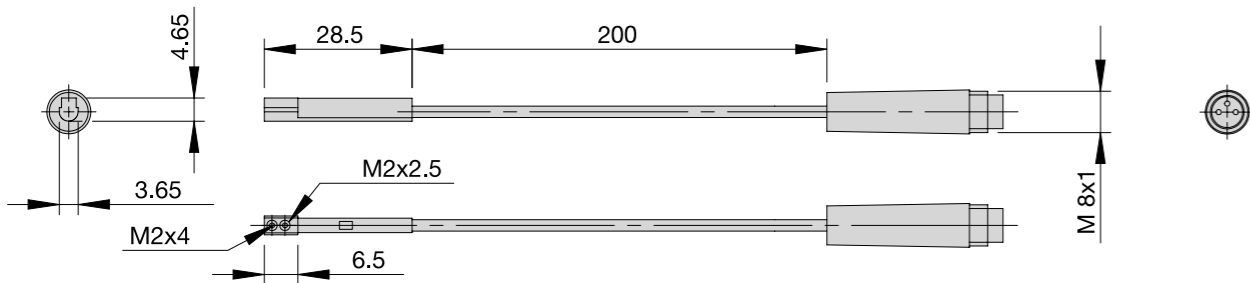
INI c10x19.5-Em-PNP-NO-M8x1

Bestellnummer	50313987
Nettogewicht	0.021 kg
Betriebsspannung	10 - 30 VDC



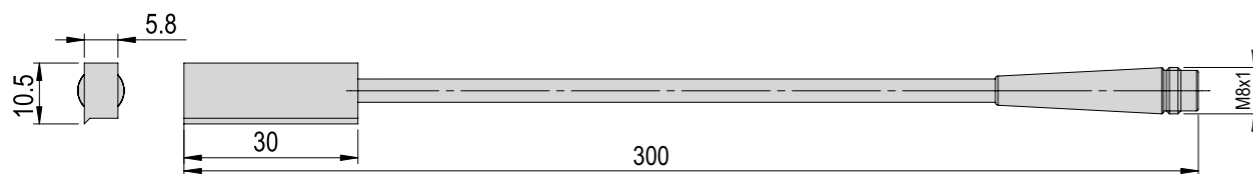
INI c10x28.5-Em-PNP-NO-M8x1

Bestellnummer	50033432
Nettogewicht	0.02 kg
Betriebsspannung	10 - 30 VDC



INI 10.5x5.8x30-Em-PNP-NO-M8x1

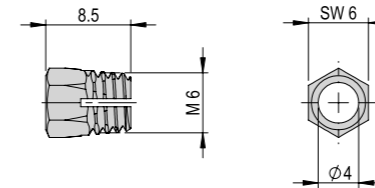
Bestellnummer	11012933
Nettogewicht	0.013 kg
Betriebsspannung	10 - 30 VDC



Zubehör Initiatoren

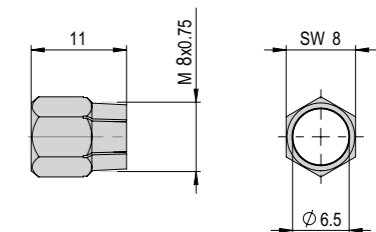
Klemm-Mutter M6x1

Bestellnummer	50042748
Nettogewicht	0.001 kg
Ø	4 mm
Gewinde	M6 x 1 mm



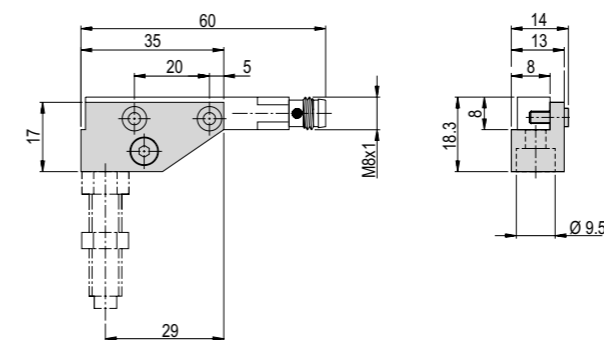
Klemm-Mutter M8x0.75

Bestellnummer	11005436
Nettogewicht	0.001 kg
Ø	6.5 mm
Gewinde	M8 x 0.75 mm



Initiatorhalter IH9.5/8x8

Bestellnummer	11004997
Nettogewicht	0.021 kg
Ø	8x8 mm
Werkstoff	Zink-Druckguss



Initiatorhalter IH10/6.5

Bestellnummer	11004995
Nettogewicht	0.015 kg
Ø	6.5 mm
Werkstoff	Messing vernickelt

