

Shock absorbers

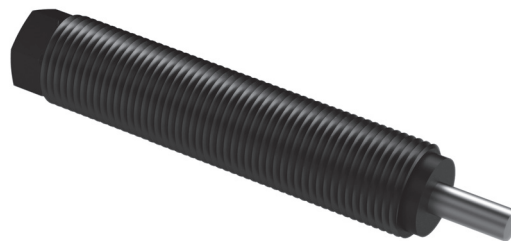
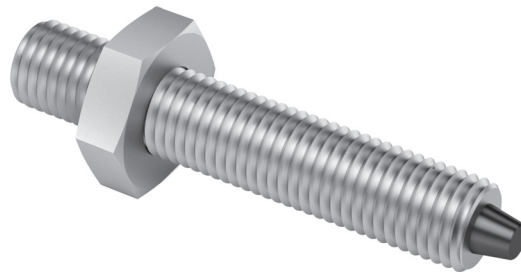


Table of contents: Shock absorbers

Shock absorbers	Page
Elastomer shock absorber ASED	57
Accessories ASED	57
Stop screw/shock absorber ASSD	58
Shock absorbers SD	59
Accessories SD	61

	ASED M4x0.5-1 50389768	ASED M5x0.5-1 50282683	ASED M6x0.5-1 50298509	ASSD M5x0.5 -3 50599453	ASSD M6x0.5 -5 50599454	SD M6x0.5-2 50310020	SD M6x0.5-3 50287720	SD M8x1-2 11004990	SD M8x1-3 50041089	SD M8x1-4 50177008	SD M8x1-5 50288020	SD M10x1-4 50279077	SD M10x1-5 50337721	SD M12x1-1 50287972	SD M14x1-1 11004987	SD M14x1-2 11004988	SD M20x1.5-1 50252844	SD M25x1.5-1 50252854	SD M14x1 -3 50001055
CS 6	■																		
CS 8		■		■															
CS 12			■		■														
CS 16										x									
CS 20												x							
CS 25																■			
LM 12								■											
LM 16								■											
LM 20															■				
LM 25															■				
LM 32															■				
HM 10							x												
HM 16											x								
HM 25													x						
PMP															■				
PMP-c															■				
CR 12						x													
CR 16												x							
CR 20												x							
CR 25																	x		
CR 32																		x	
RM 12								■											
RM 16									■										
RM 25															■				
RM 32																			■
GMQ 12								■											
GMQ 20								■											
GMQ 32																			

x This shock absorber (SD) may only be operated with Afag stop sleeves.

ASED: Stop screw with elastic shock absorber

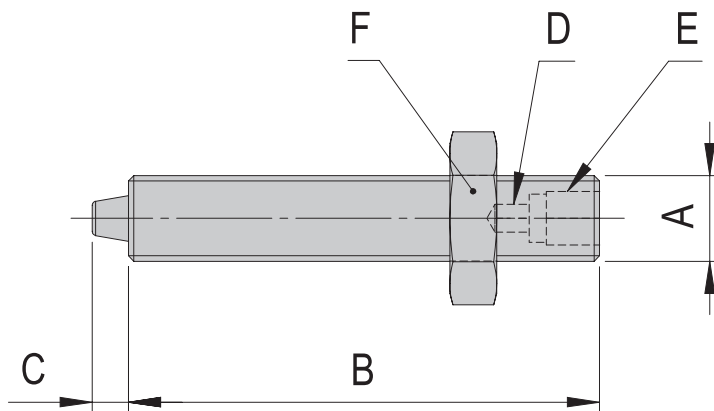
ASSD: Stop screw with shock absorber

SD: Shock absorber

Elastomer damper ASED

Elastomer shock absorber ASED	M4x0.5 -1	M5x05 -1	M6x0.5 -1
Order number	50389768	50282683	50298509
Net weight	0.002 kg	0.003 kg	0.006 kg
Repeat accuracy	+/- 0.01 mm	+/- 0.01 mm	+/- 0.01 mm
Max. energy input/stroke	0.005 Nm	0.02 Nm	0.03 Nm
Max. energy input/s	8 Nm	32.4 Nm	48 Nm
Suitable for	CS 6/...-ED	CS 8/...-ED	CS 12/...-ED
A	M4 x 0.5	M5 x 0.5	M6 x 0.5
B	22 mm	26 mm	30 mm
C	1.7 mm	2.8 mm	3.1 mm
D	SW 1.3 mm	SW 1.5 mm	SW 2 mm
E	SW 2.5 mm	SW 3 mm	SW 4 mm

4



Accessories

- Absorbing element for ASED M4x0.5 -1 [S. 56]
- Absorbing element for ASED M5/M6x0.5 -1 [S. 56]

Accessories ASED

Absorbing element for ASED M4x0.5 -1	
Order number	50400874
Net weight	0.001 kg
Suitable for	ASED M4x0.5-1

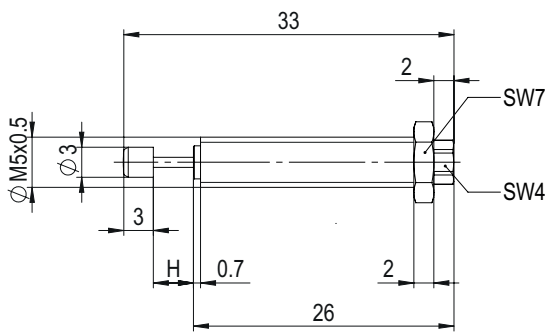
Absorbing element for ASED M5xM6x0.5 -1	
Order number	50286941
Net weight	0.001 kg
Suitable for	ASED M5/M6x0.5-1



Stop screw/Shock absorber ASSD

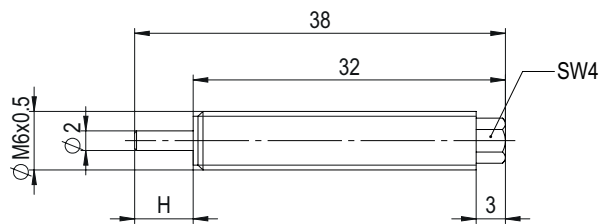
Stop screw/shock absorber ASSD M5

Order number	50599453
Net weight	0.001 kg
Max. energy input/stroke	0.8 Nm
Max. energy input/s	2100 Nm
Suitable for	CS 8/...-SD



Stop screw/shock absorber ASSD M6

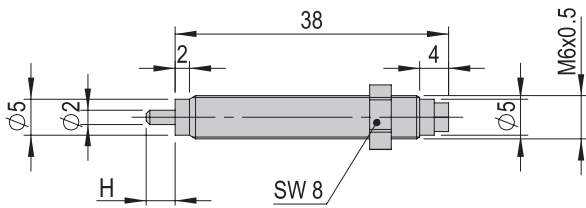
Order number	50599454
Net weight	0.001 kg
Max. energy input/stroke	1.0 Nm
Max. energy input/s	34 Nm
Suitable for	CS 12/...-SD



Shock absorbers SD

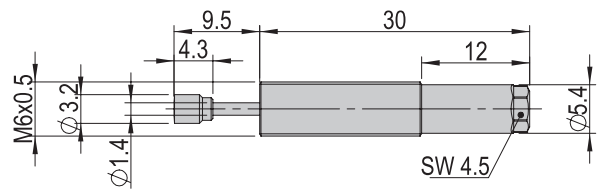
Shock absorber SD M6x0.5 -2

Order number	50310020
Stroke H	4 mm
Net weight	0.007 kg
Max. energy input/stroke	1.5 Nm
Max. energy input/s	3 200 Nm
Suitable for	CR 12



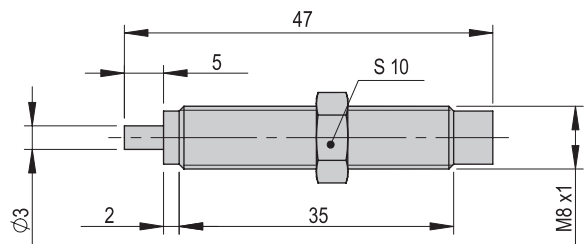
Shock absorber SD M6x0.5 -3

Order number	50287720
Net weight	0.007 kg
Max. energy input/stroke	1 Nm
Max. energy input/s	2 400 Nm
Suitable for	HM 10



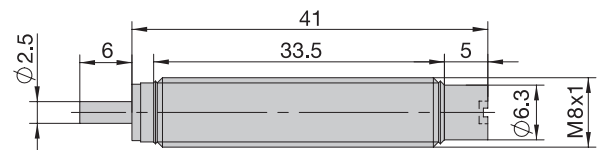
Shock absorber SD M8x1 -2

Order number	11004990
Net weight	0.016 kg
Max. energy input/stroke	3 Nm
Max. energy input/s	5 650 Nm
Suitable for	LM 12, LM 16 RM 12 GMQ 12, GMQ 20, GMQ 32



Shock absorber SD M8x1 -3

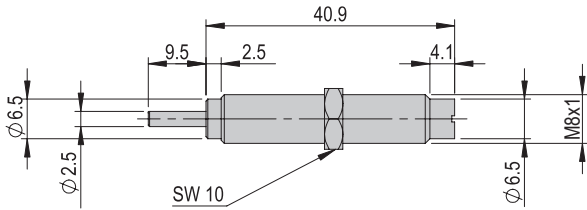
Order number	50041089
Net weight	0.011 kg
Max. energy input/stroke	3 Nm
Max. energy input/s	5 650 Nm
Suitable for	RM 16



Shock absorbers SD

Shock absorber SD M8x1 -4

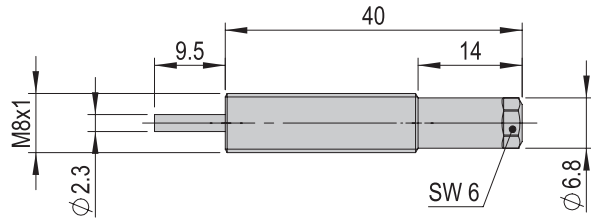
Order number	50177008
Net weight	0.001 kg
Max. energy input/stroke	3.5 Nm
Max. energy input/s	5 600 Nm
Suitable for	CS 16



Note: The shock absorber may only be operated with the stop sleeve!

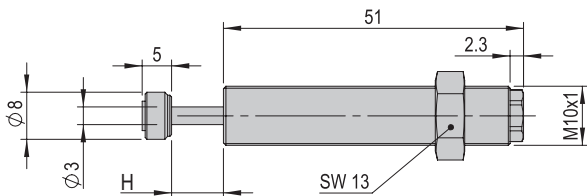
Shock absorber SD M8x1 -5

Order number	50288020
Net weight	0.013 kg
Max. energy input/stroke	4 Nm
Max. energy input/s	9 000 Nm
Suitable for	HM 16



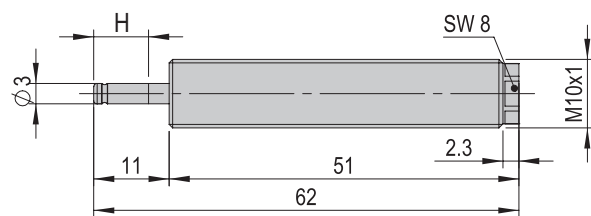
Shock absorber SD M10x1 -4

Order number	50279077
Stroke H	8 mm
Net weight	0.038 kg
Max. energy input/stroke	12 Nm
Max. energy input/s	20 000 Nm
Suitable for	CR 16, CR 20



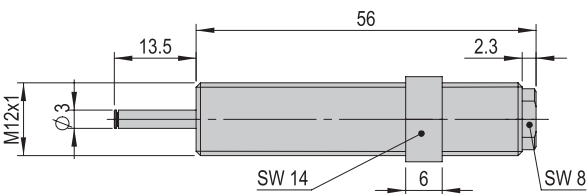
Shock absorber SD M10x1 -5

Order number	50337721
Stroke H	8 mm
Net weight	0.02 kg
Max. energy input/stroke	10 Nm
Max. energy input/s	18 000 Nm
Suitable for	CS 20



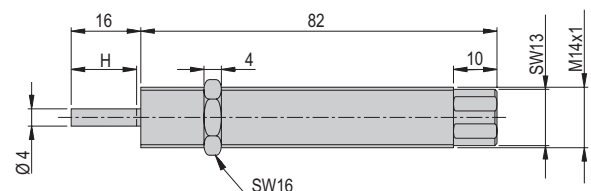
Shock absorber SD M12x1 -1

Order number	50287972
Net weight	0.035 kg
Max. energy input/stroke	16 Nm
Max. energy input/s	30 000 Nm
Suitable for	HM 25



Shock absorber SD M14x1 -1

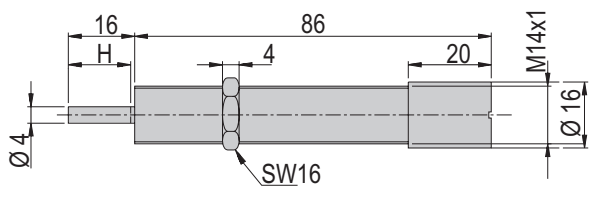
Order number	11004987
Stroke H	15 mm
Net weight	0.065 kg
Max. energy input/stroke	15 Nm
Max. energy input/s	32 000 Nm
Suitable for	LM 20, LM 25, LM 32 RM 25 PMP, PMP-c



Shock absorbers SD

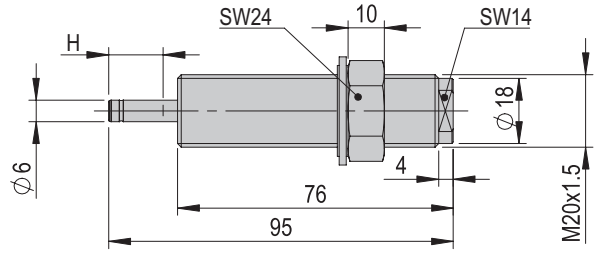
Shock absorber SD M14x1 -2

Order number	11004988
Stroke H	15 mm
Net weight	0.077 kg
Max. energy input/stroke	17 Nm
Max. energy input/s	34 000 Nm
Suitable for	CS 25



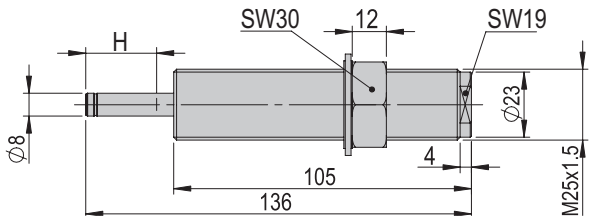
Shock absorber SD M20x1.5 -1

Order number	50252844
Stroke H	15 mm
Net weight	0.07 kg
Max. energy input/stroke	80 Nm
Max. energy input/s	80 000 Nm
Suitable for	CR 25



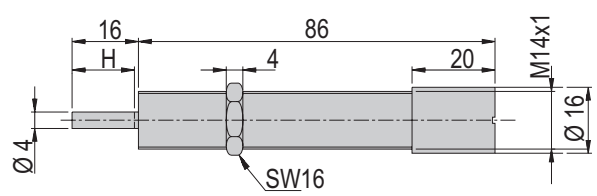
Shock absorber SD M25x1.5 -1

Order number	50252854
Stroke H	25 mm
Net weight	0.106 kg
Max. energy input/stroke	210 Nm
Max. energy input/s	120 000 Nm
Suitable for	CR 32



Shock absorber SD M14x1 -2

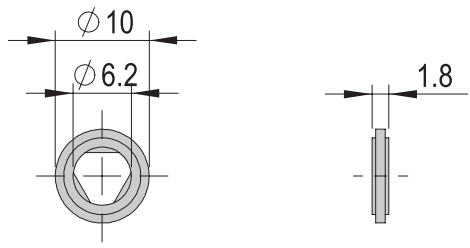
Order number	50001055
Stroke H	15 mm
Net weight	0.077 kg
Max. energy input/stroke	17 Nm
Max. energy input/s	34 000 Nm
Suitable for	CS 25



Accessories SD

Seal for SD M6x 0.5-2

Order number	50310021
Net weight	0.001 kg
Suitable for	SD M6x0.5-2



Seal for SD M10x 1-4

Order number	50300442
Net weight	0.002 kg
Suitable for	SD M10x1-4

