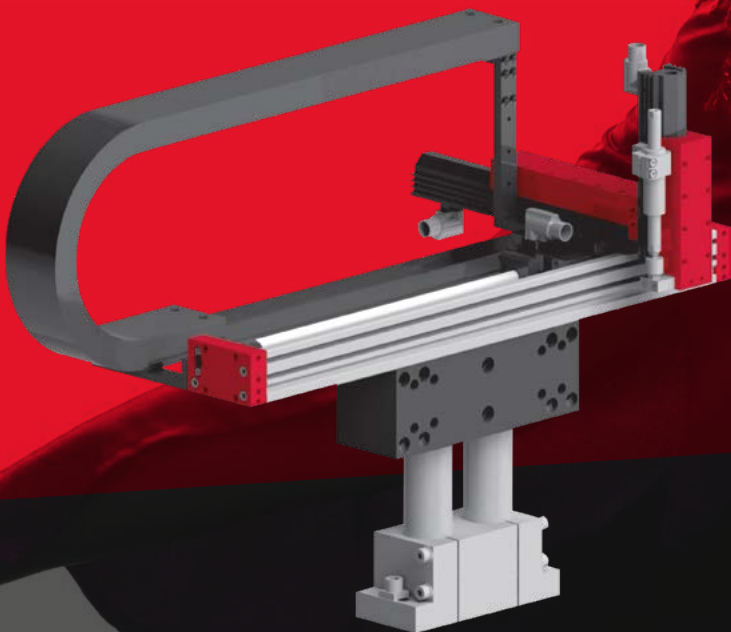


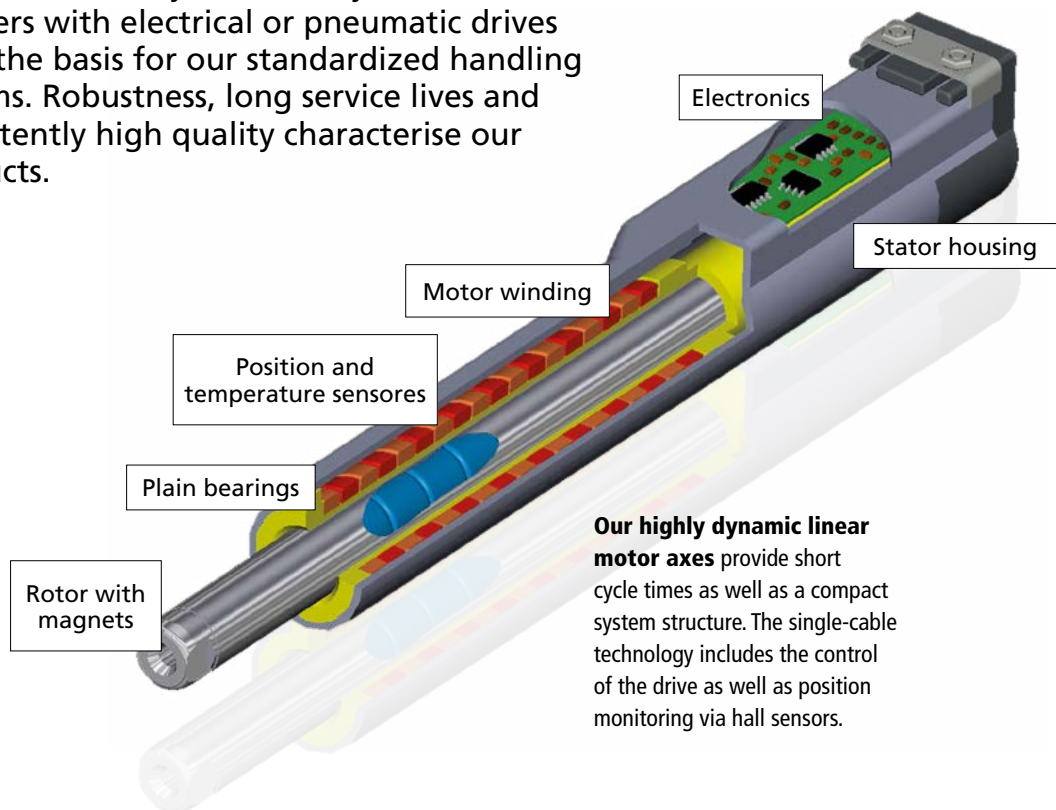


Handling
systems
**Fascinating
Movement.**
Yesterday. Today. Tomorrow.



From the module to the handling system

Linear axes, rotary axes, rotary modules and grippers with electrical or pneumatic drives form the basis for our standardized handling systems. Robustness, long service lives and consistently high quality characterise our products.



Our highly dynamic linear motor axes provide short cycle times as well as a compact system structure. The single-cable technology includes the control of the drive as well as position monitoring via hall sensors.



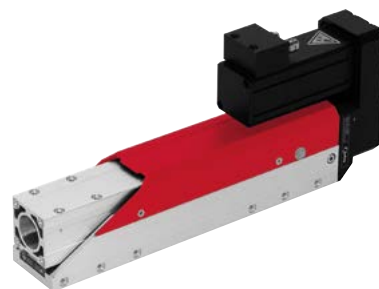
High-quality, double-row linear guides with ball chains guarantee extremely smooth running, precision, a long service life and therefore virtually maintenance-free operation, even for very short cycle times.

Afag's electrical and pneumatic grippers provide the right bite for almost any task.



For toothed belts and spindle axes, we provide a scalable scope of delivery from the pure axis mechanics to the complete system, including controllers and motors from established suppliers. For linear motors, we recommend our own motors and controllers due to the high dynamics.

Spindle drives for powerful movement and toothed belt drives for long strokes expand the application range of the systems. Pneumatic linear and rotary drives round off the product portfolio.

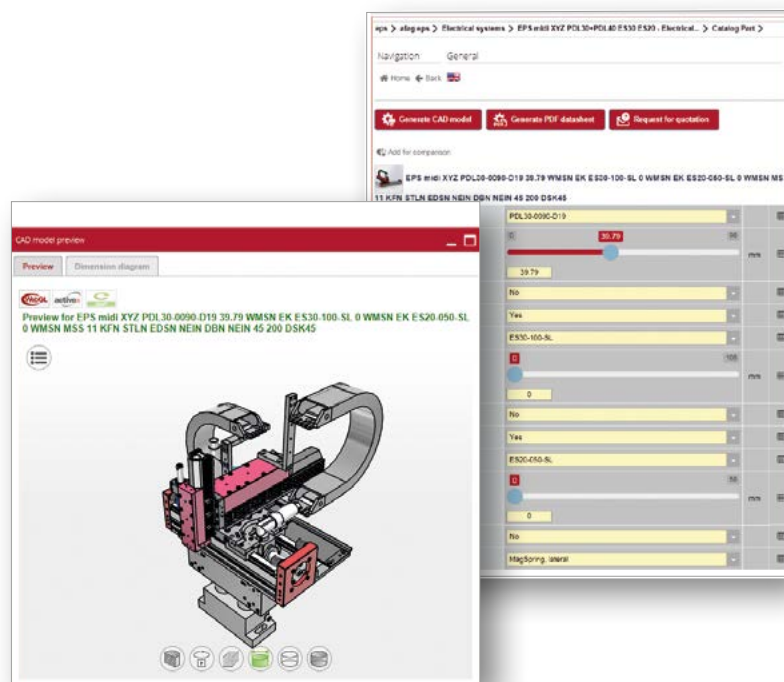


Handling configurator

Our handling configurator significantly reduces your construction time. The 3D model created by you will be adopted immediately to check for interfering contours in your design.

A large selection of our standard modules is available for your application. Whether electrical or pneumatic, or with linear motors or spindle/belt drives, your engineers will configure the system and we will support you through optimisation and a performance calculation with a guaranteed cycle time.

Special designs are created by our engineers upon customer request and then made available as 3D models.



Advantages >>>

- › High availability through standardised systems
- › Cycle time guarantee ensures the success of your project
- › Short project durations
- › No time-consuming parametrisation of axes
- › Scalable systems reduce costs and space requirements
- › Simple programming through control via your PLC
- › No robot control required

Our system offers >>>

- › High dynamics due to axes that have been optimally coordinated with one another
- › Freely configurable systems through the Partserver – access via our homepage
- › Precise positioning due to the robust construction
- › Complete installation, from the console through to the gripper, with system wiring
- › The same control system – from P & P up to 4 axis system
- › Parametrisation and test run before delivery

Handling systems – the right system for every application



EPS mini YZ

Compact, only 40 mm wide, quick and flexible

Stroke Z	Stroke Y			
	50 mm	100 mm	200 mm	300 mm
*	50 mm	100 mm	200 mm	300 mm
50 mm	3 kg	3 kg	2 kg	1 kg
100 mm	3 kg	2 kg	1 kg	0.5 kg
200 mm	2 kg	1 kg	–	–
300 mm	1 kg	–	–	–



EPS midi YZ

Compact handling with boom Y to 500 mm

Stroke Z	Stroke Y					
	50 mm	100 mm	200 mm	300 mm	400 mm	500 mm
*	50 mm	100 mm	200 mm	300 mm	400 mm	500 mm
50 mm	3 kg	5 kg	5 kg	4 kg	3 kg	2 kg
100 mm	5 kg	5 kg	4 kg	3 kg	2 kg	1 kg
200 mm	5 kg	4 kg	3 kg	2 kg	1 kg	0.5 kg
300 mm	4 kg	3 kg	2 kg	1 kg	0.5 kg	0.5 kg



EPS maxi YZ

Powerful, robust and dynamic

Stroke Z	Stroke Y					
	50 mm	100 mm	200 mm	300 mm	400 mm	500 mm
*	50 mm	100 mm	200 mm	300 mm	400 mm	500 mm
50 mm	8 kg	7 kg	6 kg	5 kg	4 kg	3 kg
100 mm	7 kg	6 kg	5 kg	4 kg	3 kg	2 kg
200 mm	6 kg	5 kg	4 kg	3 kg	2 kg	1 kg
300 mm	5 kg	4 kg	3 kg	2 kg	1 kg	0.5 kg
400 mm	4 kg	3 kg	2 kg	1 kg	0.5 kg	–
500 mm	3 kg	2 kg	1 kg	0.5 kg	–	–



EPS gantry h

Quickly operate large areas due to suspended setup

Stroke Z	Stroke Y	
	90 – 630 mm	670 – 1130 mm
*	90 – 630 mm	670 – 1130 mm
50 mm	5 kg	3 kg
100 mm	4 kg	2 kg
200 mm	3 kg	1 kg



EPS mini XZ

Compact for longer strokes

Stroke Z	Stroke X
*	up to 640 mm
50 mm	3 kg
100 mm	2 kg
200 mm	1 kg



EPS midi XZ

Torsion stiffness and dynamic X axle for long strokes

Stroke Z	Stroke X
*	up to 1660 mm
50 mm	3 kg
100 mm	2.5 kg
200 mm	2 kg
300 mm	1.5 kg



EPS maxi XZ

Powerful, dynamic and robust for long strokes

Stroke Z	Stroke X
*	up to 1660 mm
50 mm	8 kg
100 mm	7 kg
200 mm	6 kg
300 mm	5 kg
400 mm	4 kg
500 mm	3 kg



EPS gantry s

Simple, accessible setup, space-saving

Stroke Z	Stroke Y		
*	60 – 270 mm	290 – 430 mm	450 – 640 mm
50 mm	4 kg	3 kg	1.5 kg
100 mm	3 kg	2 kg	1 kg
200 mm	2 kg	1 kg	0.5 kg
300 mm	1 kg	0.5 kg	–

* Payload table refers to the centric gripping of the load.



EPS mini XYZ

Linear, scalable alternative for the robot

Stroke Z	Stroke Y		
*	50 mm	100 mm	200 mm
50 mm	3 kg	2 kg	1 kg
100 mm	2 kg	1 kg	0.5 kg
200 mm	1 kg	0.5 kg	-



EPS midi XYZ

Dynamic, flexible and scalable

Stroke Z	Stroke Y					
*	50 mm	100 mm	200 mm	300 mm	400 mm	500 mm
50 mm	3 kg	3 kg	2 kg	1 kg	0.5 kg	0.5 kg
100 mm	3 kg	2 kg	1 kg	0.5 kg	0.5 kg	-
200 mm	2 kg	1 kg	0.5 kg	-	-	-
300 mm	1 kg	0.5 kg	-	-	-	-



EPS maxi XYZ

Powerful alternative with variable strokes

Stroke Z	Stroke Y					
*	50 mm	100 mm	200 mm	300 mm	400 mm	500 mm
50 mm	5 kg	4 kg	3 kg	2 kg	1 kg	0.5 kg
100 mm	4 kg	3 kg	2 kg	1 kg	0.5 kg	-
200 mm	3 kg	2 kg	1 kg	0.5 kg	-	-
300 mm	2 kg	1 kg	0.5 kg	-	-	-
400 mm	1 kg	0.5 kg	-	-	-	-
500 mm	0.5 kg	-	-	-	-	-



EPS gantry XXYZ

Dynamic for large areas and higher loads

Stroke Z	Stroke Y
*	up to 1660 mm
50 mm	8 kg
100 mm	7 kg
200 mm	5 kg
300 mm	4 kg
400 mm	3 kg
500 mm	2 kg

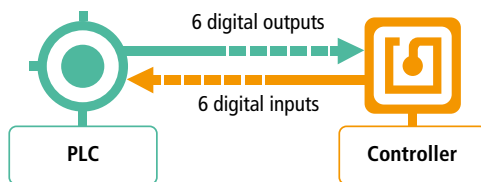
Control technology – simple systems completely configured

From controllers through to the complete switch cabinet, we offer a wide range of solutions for the control of electric systems. All controllers are system-configured and parametrised before delivery so that the hassle of time-consuming drive unit parametrisation is avoided and you can concentrate on your application.



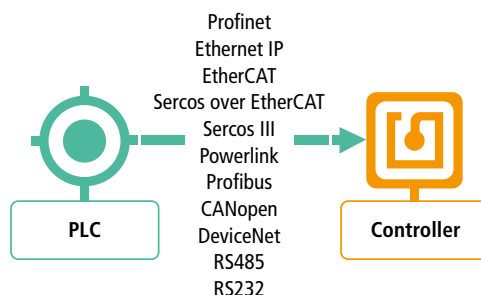
Smaller than ever!

The new C11xx and C12xx series
L x W x H:
206 x 26.6 x 106 mm



Simple control such as pneumatic handling.

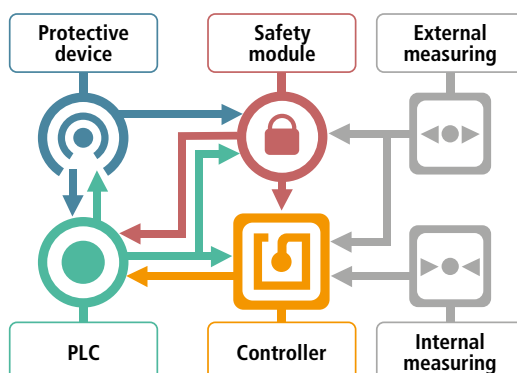
- › Ideal replacements for old pneumatic units
- › Very simple control thanks to the digital inputs/outputs of the PLC
- › Very compact design
- › Excellent cost effectiveness



Control via bus systems.

- › All common bus systems: Profinet, Ethernet IP, EtherCAT, Sercos over EtherCAT, ...
- › Components and example programs for the common PLC (S7, Beckhoff, B&R, ...) for quick commissioning of the systems
- › Point to Point or track control by position streaming
- › Back-up and download of all parameters possible via the PLC

Block diagram



Safely reduced speed. Setting up at a safely reduced speed decreases the costs for commissioning.

Due to growing system complexity, setting up special-purpose machines in assembly technology is becoming increasingly demanding. For setting up handling systems with the safety door open, we offer the function "Safely-Limited Speed" (SLS).

- › Efficient setup
- › Simple troubleshooting
- › Safe system optimization
- › cat=3 PL=d (EN ISO 13849-1)



**Handling and feeding technology
Afac Automation AG**

Fiechtenstrasse 32
4950 Huttwil
Switzerland

T +41 62 959 86 86
sales@afag.com

**Feeding technology
Afac GmbH**

Werner-von-Braun-Straße 1
92224 Amberg
Germany

T +49 9621 650 27-0
sales@afag.com

**Handling systems
eps GmbH**

Gewerbestraße 11
78739 Hardt
Germany

T +49 7422 560 03-0
info@eps-automation.de

**Afac Automation Nordamerika
Schaeff Machinery & Services LLC.**

820 Fessler's Parkway, Suite 210
Nashville, TN 37210
USA

T +1 (615) 730-7515
nashville@afag.com

**Afac Automation Asien
Afac Automation Technology (Shanghai) Co., Ltd.**

Room 102, 1/F, Bldg. 56, City Of Elite
No.1000, Jinhai Road, Pudong New District
Shanghai, 201206
China

T +86 021 58958065
shanghai@afag.com

**Engineering
Technisches Büro Pöhler GmbH**

Gottlieb-Daimler-Straße 43
89150 Laichingen
Germany

T +49 7333 9614-0
info@tb-poeehler.de

**Engineering
TBK GmbH**

Friedrich-Bauer-Str. 27
73642 Welzheim
Germany

T +49 7182 93690-0
info@tbk-gmbh.eu

